

Wastewater and COVID-19: What are the Risks?

From the University of Minnesota Onsite Sewage Treatment Program

We know that wastewater treatment plant (WWTP) operators and subsurface sewage treatment system (SSTS) maintainers, service providers and installers are commonly exposed to untreated wastewater that contains disease-causing organisms including pathogens (primarily bacteria and viruses) when cleaning out or repairing septic, holding, and pump tanks along with aerobic treatment units. When wastewater professionals are working on a system, workers are unlikely to know which specific disease-causing organisms are in the wastewater, including COVID-19.

Here is what we know to date:

- The World Health Organization WHO has indicated that “there is no evidence to date that COVID-19 virus has been transmitted via sewer systems, with or without wastewater treatment.”
- Wastewater treatment plants and septic systems treat viruses and other pathogens. COVID-19 is a type of virus that is particularly susceptible to disinfection. Standard treatment and disinfection processes at wastewater treatment plants are expected to be effective. Septic systems use similar processes in conjunction with unsaturated soil to treat pathogens.
- The U.S. Department of Labor’s Occupational Safety and Health Administration (OSHA) states there is no evidence to suggest that additional, COVID-19 specific protections are needed for employees in wastewater management operations, and OSHA encourages workers to follow routine practices to prevent exposure to wastewater.
- The Center for Disease Control and Prevention (CDC) notes that wastewater and sewage workers should use standard practices of basic hygiene precautions (e.g. handwashing) and wear personal protective equipment (PPE) as prescribed for work tasks. In consultation with local health officials, onsite sewage system professionals should consider the following routine disease prevention practices for onsite sewage system tank cleaning, operation and maintenance, and repairs to help protect service providers from potential infection of COVID-19.

INSIDE THIS ISSUE:

Wastewater and COVID-19:
What are the Risks... 1-2

Webcasts about Onsite
Wastewater Treatment
Septic Smart Week
Government Relations.....3

Raising Awareness about
Suicide Prevention.....4

PHCC Contractor Sentiment
Survey Results 4-5

Looking for Jobsite Stories..5

Meet Ben Kinas.....6

News You Can Use7

Updates from DSPS.....8

By the Numbers
NOWRA Online Training9

NOWRA Benefits.....10

Septic System Order Form 11

WOWRA Membership12

2020 Business Promotion
Program13

From our Sponsors 14-15

2021 Winter Conference ..15

WOWRA Board16

Contact Us:

WOWRA
PO Box 833
Germantown, WI 53022
Phone: 888-782-6815
Fax: 888-287-4116
info@wowra.com
www.wowra.com

Continued on page 2

Here is what we don't know yet:

COVID-19 concentrations and survival in feces, sewage or water are currently unknown. The virus that causes COVID-19 has been detected in the feces of some patients diagnosed with COVID-19. The amount of virus released from the body (shed) in stool, how long the virus is shed, and whether the virus in stool is infectious are not known. According to research conducted by the Washington Onsite Sewage Association, the aerosolization of sewage through standard methods of pumping pose the greatest unrecognized risk to workers as they found the act of opening the lids on tankage and lifts stations exposed workers to aerosolized pathogens.

The risk of transmission of COVID-19 from the feces of an infected person is also unknown. However, the risk is expected to be low based on data from previous outbreaks of related coronaviruses, such as severe acute respiratory syndrome (SARS) and Middle East respiratory syndrome (MERS). There have been no reports of fecal-oral transmission of COVID-19 to date. SARS has been detected in untreated sewage for up to 2 to 14 days. In the 2003 SARS outbreak, there was documented transmission associated with sewage aerosols.

How to protect yourself, your workers and your families:

Operators and SSTS professionals performing essential tasks need to protect public health and safety and must continue to work during this outbreak and therefore it is critical that they do so safely. Wastewater professionals must be provided proper personal protective equipment (PPE), be trained on how to use it, and hand washing facilities/waterless sanitizers. Workers should avoid touching their face, mouth, eyes, nose, and open sores and cuts and not chew gum or tobacco while handling sewage. Workers should wash hands with soap and water immediately after removing PPE or use waterless sanitizers. Do keep in mind that waterless hand sanitizers are not as effective on hands that are dirty with grime and grit therefore it is advisable to use soap and water prior to eating or drinking. The following PPE is recommended for workers handling human waste or sewage:

- Goggles to protect eyes from splashes of human waste or sewage.
- Protective face mask or splash-proof face shield to protect nose and mouth from splashes/ aerosolization of human waste or sewage. Depending on the type of work this could include N95 masks with a verification of "face fit" testing for the employee including the limitation of facial hair.
- Liquid-repellent coveralls to keep human waste or sewage off clothing.
- Waterproof gloves to prevent exposure to human waste or sewage.
- Rubber boots to prevent exposure to human waste or sewage.
- Keep in mind that wastewater professionals in high-risk categories due to age, underlying health issues or have family members at risk should be particularly careful working around untreated sewage. Therefore, removing work clothes before returning home is advisable.

What about all this toilet paper?

Toilet paper is designed to be flushed and, as long as used in normal amounts, will not cause an issue in WWTP or septic systems. Sanitizer wipes should NEVER be flushed down a toilet (including those labeled flushable). If due to shortages of toilet paper people need to utilize other paper products such as paper towels or facial tissues these items should be placed in the garbage, NOT the toilet.

Is your water safe to drink?

The simple answer is yes. The virus that causes COVID-19 is not spread through drinking water, and the World Health Organization says it hasn't been detected in any water supplies. Conventional water treatment removes or inactivates the virus. There is no need to buy bottled water.

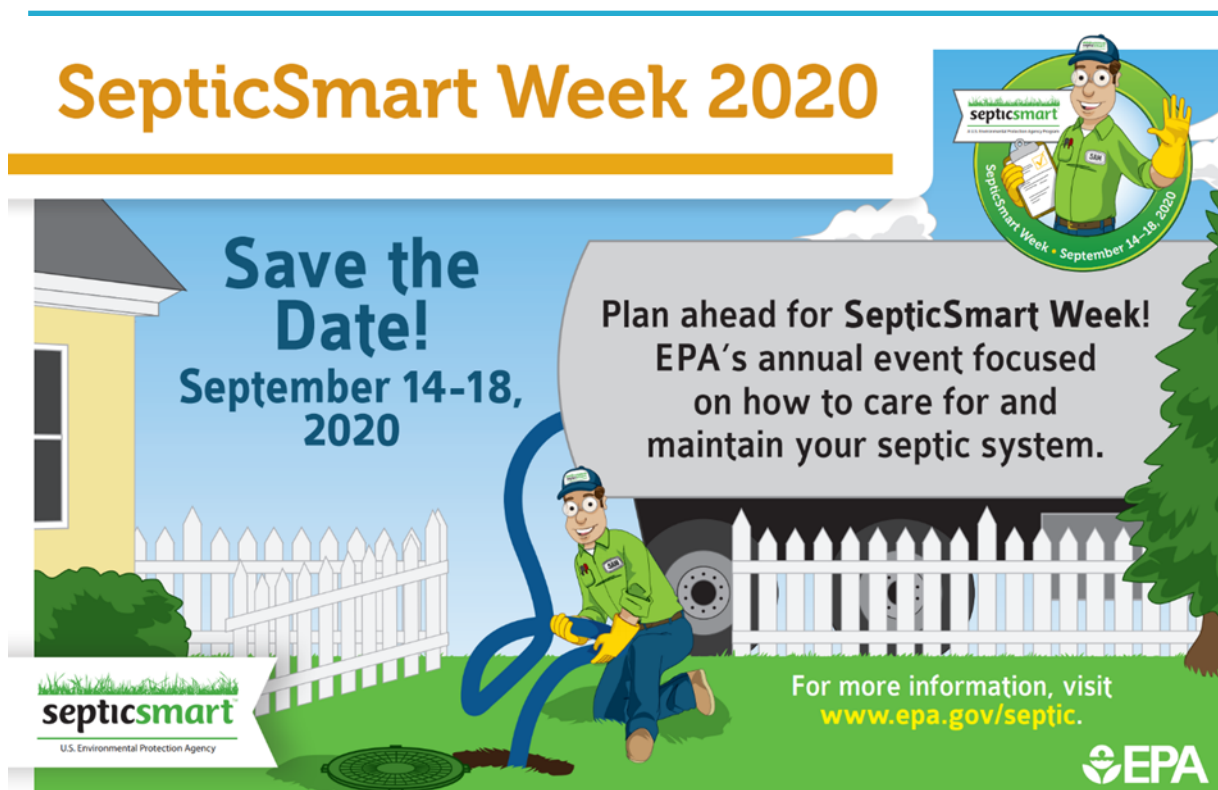
Webcasts about Onsite Wastewater Treatment

EPA's Decentralized Wastewater Management MOU Partnership sponsors quarterly webcasts to discuss issues of interest to the decentralized community. You can find the transcripts, speaker lists, and presentations from each of the webcasts.

<https://www.epa.gov/septic/webcasts-about-onsite-wastewater-treatment#disaster>

A sampling of topics include:

- Natural Disaster Preparedness and Recovery for Communities Served by Decentralized Wastewater Systems
- Career Perspectives in Decentralized Wastewater Management
- State Examples of Septic System Data Management
- To De or Not to De? - The Centralized Question



Where's the Government Relations Report?

There's a lot going on and WOWRA has you covered. Our goal is to highlight the work we do, every day, for you and the industry in a stand-alone publication. So, the government relations report is now being sent to you separately. Look for this additional communication each month from WOWRA, providing news and insights on the issues affecting our industry – licensing, plan review, executive orders, legislation, court rulings, code committees, technical advisory committees, study groups and task forces, elections and more.



Raising Awareness about Suicide Prevention

In an [article](#) by in the March 11, 2020 edition of the *Wall Street Journal* article, author and researcher Te-Ping Chen wrote about the construction industry and suicide, noting that, “Among occupations in the U.S., workers in construction and extraction face the highest rate of suicide, according to a January report from the Centers for Disease Control and Prevention.” The Construction Financial Management Association agrees, noting that “Construction is the number one industry for number of suicides and the number two industry in suicide rates. As such, it is an industry imperative to shatter the mental health stigma and create caring cultures within our companies.”

If the statistics surprises you, you’re not alone. It’s not the sort of topic most companies cover in safety meetings and most construction companies don’t have HR departments to address the issue. Field supervisors are more focused on jobsite safety than mental health and they lack the training they would need to discuss the issue. Like other safety issues, however, the key is communication, training, and awareness. The topic may be more awkward than hardhats and lockout/tagout, but worth discussing as the topic of a toolbox talk.

There are additional resources at: <https://preventconstructionsuicide.com/>.

PHCC Contractor Sentiment Survey Results

The Plumbing Heating Cooling Contractors National Association surveyed its members to track trends during the pandemic. Results include:

- 43% of contractors indicated that COVID-19 has had adverse impact on their businesses and 57% of respondents indicated medium to low impact on their businesses. Major issues include: (quoted directly from survey results collected on May 4, 2020)
 - ◇ Business slow, low call volume- Clients only seeking emergency repairs
 - ◇ Business off by 40-50%. Construction shut down in many areas
 - ◇ Business coming back as well as furloughed employees, but jobs will take longer with added safety measures being taken
 - ◇ Jobsite congestion
 - ◇ Employees would rather be laid off and collect the extra \$600/week unemployment
- 83% of respondents applied for federal financial assistance
- 77% of contractors indicated that manufacturers and suppliers have been highly responsive to serving their needs. 62% of respondents indicated that they are not facing supply chain disruptions due to COVID-19. Concerns shared include:
 - ◇ Longer wait times when ordering, shipping delays, cost increases and decreased hours of operation. Rescheduling due to shipment delays.
 - ◇ Difficulties in finding personal protective equipment (PPE), cleaning material, etc.
 - ◇ Cannot enter supply houses Must call first, then pick up at curb
- Respondents noted several areas of concern related to the impact of COVID-19 on their workforce:
 - ◇ Emotionally and socially it has impacted their everyday life - juggling family members that have been laid off, children at home being home-schooled, fear of income reduction, job loss, etc.
 - ◇ Loss of production due to potential exposure to others that either tested positive or showed symptoms of COVID-19
 - ◇ Reduced work hours for the crew in order to keep them on the payroll and avoid layoffs
 - ◇ Splitting schedules impacts the daily workload.
 - ◇ Increase level of safety measures. Higher than normal tension and stress.
 - ◇ Our shop is organized and clean!

Continued on page 5

- Respondents shared how they are mitigating safety risks for employees and clients:
 - ◇ We have put together very detailed safety protocols for both the field and the office
 - ◇ End of each day -- sanitation standards must be followed (following CDC guidelines)
 - ◇ Asking customers to stay away from our employees. We are following PPE and social distancing requirements.
 - ◇ Clients are verbally screened over the phone, and employees are masked, gloved, and shoe covered the entire visit.
 - ◇ We're reducing some of the places where multiple employees are using the same surface/device (e.g. keyboards, phones, desks, etc.). We've increased our cleaning and disinfecting of common surfaces.
 - ◇ Most job sites are now requiring health screen of all employees every morning before they are allowed on site.
 - ◇ One employee per truck or job, Supplied PPE, and educated them on proper use and washing
 - ◇ Following standard CDC Procedures
 - ◇ We test temps and look for other signs [of infection]
- Contractors noted several new practices put in place since the Coronavirus outbreak:
 - ◇ New COVID-19 protocol and safety plan for all job sites and personnel
 - ◇ All job sites have been provided with toilets and hand washing resources for exclusive use by our employees
 - ◇ No shaking hands, social distancing (respect other's [personal] space)
 - ◇ Extra cleaning of tools/truck interiors/pairing "teams" that stay together to minimize "cross pollination" between trucks.
 - ◇ Daily health screenings. Cleaning of work areas, tools, and equipment.
- Contractors indicated what information they need to prepare for anticipated effects of COVID-19:
 - ◇ Continued resources for PPE supplies
 - ◇ Help to understand best business practices and compliance
 - ◇ Help employees understand furlough and unemployment
 - ◇ Industry standard safety protocols that are easily implementable and achievable.
 - ◇ Risk to plumbers specifically as they work in possibly infected environments
 - ◇ CURRENT statistics instead of cumulative
 - ◇ Government assistance programs
 - ◇ Legal. We need to know what and who we are supposed to require to work or not work and how we are supposed to pay.
 - ◇ Mechanical Skills to embrace online learning

Looking for Jobsite Stories – Both Good and Bad

To be clear, we're looking for good stories about both good and bad installations....

We're constantly looking for ways to improve our association and one of those ways is to increase the relevance of this publication. To that end, we're looking to include more feature stories about projects

Meet One of Our Newest Director of WOWRA – Ben Kinas

Company:

Kinas Excavating Inc. is a sewer and excavation company with 15 employees that services a 50- mile radius of Green Lake and Markesan. We will take on any project that we can do with a excavator or a dozer, from a load of gravel in someone's driveway to 100,000 cubic yard excavation jobs. On the sewer and septic side, we did 95 systems last year and average about 70-100 systems per year. We do simple tank replacements to complex campground systems, and systems using pretreatment. We also do sewer and water laterals and Mains for municipalities. We've been in business since 1994.

Years in Business:

I've been at Kinas Excavating for 12 years.

Equipment Inventory:

- 6 Excavators
- 2 Dozers with GPS
- 3 Compact track loaders
- 6 Quad axle dump trucks
- 3 Semi trucks with lowboy trailers

Qualifications/Licenses/Certifications:

- A Degree as a Civil engineering highway technician from Mid-State Tech College
- Certified Soil tester
- Journey man plumber restricted service
- POWTS Maintainer
- Certified existing POWTS evaluator (WOWRA Class)
- State Certified Fire Fighter 1

How Did You Get Started in the Trade:

I am a 4th generation excavator, so it was kind of in my blood. But I got my start sweeping floors and doing labor in the summer during high school for my Dad and uncles construction company and worked my way up from there. A special thank you to the two master plumbers that have taught me the plumbing trade - Dan Pollesch and David Pollesch.



Most Memorable Project - For Better or for Worse - and Why:

One of my most memorable projects would be constructing an 18 million gallon manure pit. The project involved moving 100,000 Cubic yards of material to different building sites and off-site dump sites with multiple crews working simultaneously. It was one of my first large projects that I took on as the estimator and project manager where I oversaw every aspect the job from the

bidding and cost management, to setting up our GPS design for our dozers, to coordinating upwards of 20 people on site each day.

"Go-To" Tools, Equipment, Product:

- Trimble GPS and Lasers
- Milwaukee Power Tools
- Infiltrator chambers
- Poly lock filters
- Infiltrator EZ snap risers

Most Rewarding Aspect of the Work:

The ability to meet with people and turn their dreams for a project into a reality

Most Challenging Aspect of the Work:

Coordinating. It takes a lot of meetings, phone calls and emails to make sure you have all the necessary permits, materials, tools, and people for every project.

Best Advice You've Gotten or Favorite Quote (By Who):

Treat people the way you would want to be treated.
(Lori Kinas)

Hobbies When You're Not Working:

Spending time with my family, swimming, boating, fishing, snowmobiling, and riding my UTV.

Family:

My wife, Tiffany, and our 2 kids, Cameron (6) and Callie (2).

Something People Would Be Surprised to Learn About You:

I am a state-certified firefighter, proudly serving the City of Green Lake and Town of Brooklynn for over 10 Years

News You Can Use

Coronavirus and Toilets

A study recently published in the journal, *Physics of Fluids*, found that it is possible for the Coronavirus to spread into the air when you flush the toilet. A team of researchers used computer simulations and found that flushing a toilet creates around 6,000 aerosol droplets, which can end up in the air. Between 40-60% of the droplets rise above the toilet seat and can get as high as three feet before settling back down. One thing you can do to help stop the virus from spreading is to put down the toilet seat before you flush.

Wisconsin Fund – A Reminder

While most of you are familiar, it's helpful every now and again to provide a reminder about the Wisconsin Fund, a program that provides grants to homeowners and small commercial businesses to help offset a portion of the cost for the repair, rehabilitation, or replacement of existing failing Private Onsite Wastewater Treatment Systems (POWTS). WOWRA has worked hard over the last several years to continue and increase allocations to the Wisconsin Fund and to review the eligibility requirements.

Currently, eligibility is based upon several criteria, including household income and age of the structure. 67 counties out of Wisconsin's 72 counties, the City of Franklin, and the Oneida Tribe of Wisconsin participate in the program. County government officials assist interested individuals in determining eligibility and in preparation of grant applications.

More information is available by clicking [HERE](#).

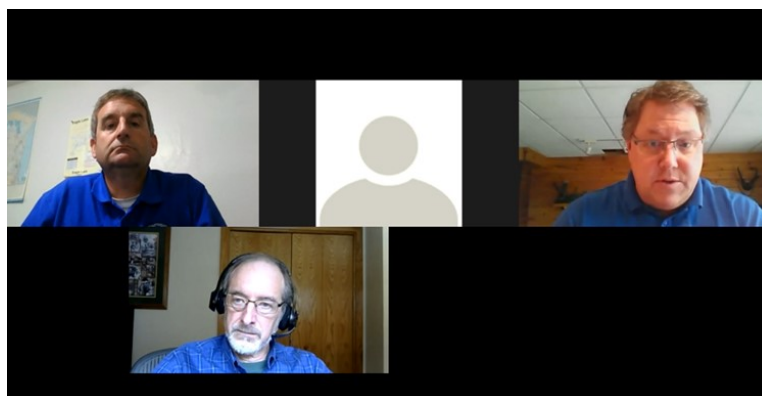
OSHA Issues Back to Work Guidance

The Occupational Safety and Health Administration (OSHA) recently issued a guidance document to help businesses as they return to work. This [document](#) explains the categories of worker risk from very high, high, medium and low. Medium-risk workers would have more contact with the general public or operate in areas with community transmission or operate in areas with possible but not confirmed COVID-19 cases, and low-risk workers would work where no contact is required with known or suspected COVID-19 cases or with the general public. The document recommends engineering controls, administrative controls, safe work practices and PPE that may be needed for the various risk categories. PHCC encourages its members to implement the appropriate steps to maintain a safe work environment.

WOWRA, DSPS Hold Seminar on Plan Submittal

On May 13, WOWRA and DSPS hosted a virtual training program on the eSLA system and submitting plans for approval. DSPS staff participating in the event included Brad Johnson, Tim Vander Leest, and Jerry Swim.

If you'd like to watch the recording of the program, you can find it here: <https://www.youtube.com/watch?v=CEJ6bzvCLck&feature=youtu.be>



Updates from DSPS

Electronic Plan Review Materials

[Emergency Order 22](#) requires electronic plan submission. DSPS has created tutorials to assist you in your transition from paper to electronic submission. Please see:

[Memo on Emergency Order 22 Electronic Plan Submission Requirements](#) for more details.

[POWTS Electronic Plan Submission Tutorial](#)

License Renewals and Continuing Education

Wisconsin Department of Safety and Professional Services
Office of the Secretary
4822 Madison Yards Way
PO Box 8363
Madison WI 53708-8368



Phone: 608-266-1352
Web: <http://dps.wi.gov>
Email: dps@wisconsin.gov

Tony Evers, Governor
Dawn B. Crim, Secretary

Memorandum

Date: April 10, 2020

To: Cross Connection Control Testers
Automatic Fire Sprinkler System Testers
Dwelling Contractor Qualifiers
Elevator Mechanics
Elevator Mechanics – Restricted
Lift Mechanics
POWTS Maintainers
Registered Electricians

From: Dawn B. Crim, Secretary-designee

RE: Continuing Education (CE) Waiver Requests During Public Health Emergency

We are working hard to ensure that all our customers are aware of the steps we are taking to maintain services and support our constituents during the public health emergency. We also understand that, as a result of COVID-19 related interruptions and cancellations, some individuals with licenses expiring in the near future may experience difficulty meeting continuing education requirements. Therefore, we are accepting requests for CE waivers for licenses that are renewing during the public health emergency. These requests will be considered on a case-by-case basis.

If you would like to request a waiver, please include your request and a supporting personal statement with your application materials. In your personal statement, be sure to indicate how and why the COVID-19 public health emergency prevented you from completing your continuing education requirements. When possible, requests for waiver should be emailed to the department at dpscredtrades@wisconsin.gov. Due to delays in mail service and COVID-19 related staffing adjustments, requests sent via mail may be delayed.

We know that most conventions, conferences and in-person learning opportunities are unavailable at the moment. However, we encourage all credential-holders—regardless of license renewal dates—to prioritize their license requirements, explore remote CEU offerings and use any available time to pursue opportunities. For many fields, online learning is and has been readily available and accessible and we will take this into consideration when we review waiver requests.

By the Numbers

13.12

The percentage of Payroll Protection Program (PPP) loans given to construction firms in the first round of program funding. The total amount awarded was nearly \$45 billion.

44

The percentage, according to a survey conducted by the Associated General Contractors of America, of contractors who received PPP loans.

43,395

The number of PPP loans awarded to Wisconsin firms during the first round of program funding. A total of \$8.32 billion was awarded, ranking Wisconsin 14th in the nation for program funding.

21st

Wisconsin's ranking, based on Gross Domestic Product, among the 50 U.S. States. As a percentage of the national GDP, Wisconsin represents about 1.6 percent. Compared to sovereign nations, the Wisconsin economy is about the same size as Denmark's. (California's economy is about double the size of Russia's!)

300 million

The number of daily participants on Zoom meetings but not the number of daily users

Online Training Opportunities Approved for Credit in Wisconsin



Whether you are new to the onsite/decentralized industry or continuing your professional development, you have come to the right place for septic system related education!

Taught by experts in the industry, NOWRA's Academy offerings cover the fundamentals of the profession as well as advanced training in multiple topics. Offerings include those developed from a national perspective and those meeting specific state requirements.

The courses included can be taken at a discounted rate as a WOWRA/NOWRA Member or at a higher rate as a Non-Member of NOWRA. You can become a member of NOWRA by joining WOWRA. These courses have been approved for DSPS continuing education for master plumber, journeyman plumber, master plumber restricted service, journeyman plumber restricted service, commercial and UDC plumbing inspector, POWTS inspector, POWTS maintainer, and soil certification tester.

Available courses are shown below. You can receive credit for each unit or for the entire program. Find out more at <https://www.pathlms.com/NOWRA>.

- Treatment Overview (1.5 Hours Credit)
- Wastewater Characteristics (1.5 Hours Credit)
- Soil and Site Evaluation (1.5 Hours Credit)
- Soil Based Gravity and Pressure Distribution (1.5 Hours Credit)
- Pumps and Controls (1.0 Hours Credit)
- Operations and Maintenance (1.0 Hours Credit)
- A to Z Overview (8 Hours Credit)

NOWRA Benefits

At WOWRA's Annual Meeting, we had the opportunity to hear about the many things that NOWRA – our national association – is doing to support our industry. Here's a partial list of what they do to support us all. We encourage you to learn more and be a part of both your State and National associations.

Representation in Washington and in Your State

NOWRA is working to secure legislative and policy changes which foster expanded use of onsite and decentralized technology and which can help the industry address the policy, management, and financial issues caused in large part by neglect at the federal level. In 2014, NOWRA established a strong lobbying presence in Washington intended to increase our industry's share of new construction from 30% to 35%, secure more federal funding to address challenges facing the industry, and get EPA to change policies which discriminate against our industry.

Septic Locator

Every NOWRA member receives a free listing on the [Septic Locator](#), the only national, searchable directory of providers of onsite wastewater management services. Your listing is controlled by you -- you can change contact information, services offered and other information in real time. Coming soon you will have the chance to enhance your listing as well.

Errors & Omissions Insurance for Designers and Inspectors.

NOWRA partnered with [The Powderhorn Agency](#), to endorse their [Errors and Omissions insurance coverage](#) for Septic Systems Designers and Inspectors. If your design or inspection work is primarily residential, you may find this coverage to be significantly less expensive than similar coverage from your insurance carrier.

Pro-Sept Residential Septic Repair and Replacement Plan

You can help your customers protect themselves against catastrophic septic repairs or system replacement by recommending they consider the [Pro-Sept warranty program](#). You help yourself at the same time, as NOWRA members earn \$30 for each customer referral.

Onsite Journal

NOWRA has resumed publication of the *Onsite Journal* magazine. This 4-color magazine offers useful

information about national developments affecting onsite wastewater, reports from state affiliates and industry vendors, and updates on NOWRA programs and services of interest. Published quarterly.

Continuing Education Opportunities

NOWRA has established the Installer Academy as the national educational entity for the decentralized wastewater industry to ensure that quality training programs are available for all industry practitioners. By participating in NOWRA's Education Programs, members gain a learned foundation that continuously builds personal and professional opportunities. NOWRA has an extensive [Online Learning Academy](#), a continuing education option for members to obtain the CEUs they need to stay in business. **All of NOWRA's online courses have been approved for continuing education credits in Wisconsin!**

Resource Library

[NOWRA's Resource Library](#) is intended to be a one-stop portal to help you identify critical information online which can help you manage your business. Published industry research, How-to manuals, regulations, financing, public outreach materials, and archived training materials are among the valuable items contained in this always growing library.

Onsite Wastewater Mega-Conference

Since 2015, NOWRA has held its annual conference in conjunction with various state affiliates organizations, teaming up to offer the Onsite Wastewater Mega-Conference -- the largest national conference and trade show solely dedicated to onsite wastewater business. For details on recent Mega-Conference's visit NOWRA's [Education and Training section](#) on the website.

Leadership

NOWRA provides all members with opportunities to have a voice in its affairs. Whether you express that by voting in NOWRA's Board of Directors elections, participating in our Annual Meeting, commenting on proposals, volunteering your time on a committee or task force, or simply sharing your views with a board member, NOWRA welcomes and encourages your involvement in our activities. The greater the involvement of its members, the stronger our industry becomes, and the better we are able to work to positively shape its future.

Order Your Septic System Operation & Management Booklets

Order Form

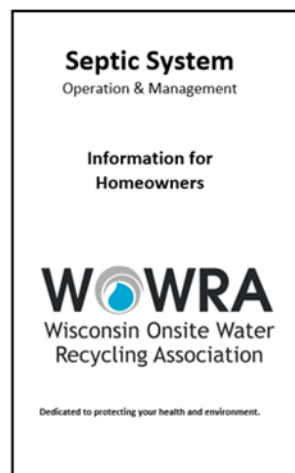
WOWRA Homeowner's Manual

The WOWRA Homeowner's Manual is a great tool for onsite professionals to provide customers with information on their septic system!

The manual includes information on septic system operation and management and provides answers to frequently asked questions.

Manuals are available for purchase for \$0.75 per manual plus shipping (varies by quantity).

Questions? Contact the WOWRA office at 888/782-6815 or info@wowra.com.



To purchase, complete the form below and return to WOWRA.

Company Name _____
First Name _____ Last Name _____
Address _____
City _____ State _____ ZIP _____
Phone _____ Email _____

_____ Quantity x \$0.75 = \$_____.00 (+ Shipping)

By Check: Payable to WOWRA

By Credit Card:

Name on Card _____
Type of Card MasterCard Visa AmEx Disc
Account # _____
Exp. Date _____ CVV Code _____
Billing Address _____

Send to: WOWRA
P.O. Box 833
Germantown, WI 53022
Email: jeff@assocmgmtservices.com
FAX: 888/287-4116

WOWRA Membership



2020 WOWRA MEMBERSHIP APPLICATION

STOP! For faster service and to pay by credit card, please register & pay on-line at www.wowra.com.



MEMBERSHIP RATES

PLEASE NOTE: Approximately 25% of your annual WOWRA dues are spent on lobbying related issues. This 25% may not be deducted from your taxes as a business expense. Please contact your tax consultant for further information.

\$230 (1 person)

Full Member

\$115 (unlimited)

Employees of a Company with a Full WOWRA member.

\$75 (State dues only)

Govt. Personnel or those with indirect interest in the onsite industry.

\$110 (State + NOWRA Dues)

Govt. Personnel or those with indirect interest in the onsite industry.

Full Member: This person will be listed first on all publications. Please note any edits (print clearly).

Name: _____

Company Name: _____

Member Type: _____ Rate: \$ _____

Address: _____ City/State/Zip: _____ County: _____

Phone: _____ Fax: _____

Email: _____ Website: _____

Circle the counties you work in. Needed for Website Directory.

Adams	Calumet	Door	Grant	Juneau	Manitowoc	Oconto	Portage	Sawyer	Washburn
Ashland	Chippewa	Douglas	Green	Kenosha	Marathon	Oneida	Price	Shawano	Washington
Barron	Clark	Dunn	Green Lake	Kewaunee	Marinette	Outagamie	Racine	Sheboygan	Waukesha
Bayfield	Columbia	Eau Claire	Iowa	La Crosse	Marquette	Ozaukee	Richland	Taylor	Waupaca
Brown	Crawford	Florence	Iron	Lafayette	Menominee	Pepin	Rock	Trempealeau	Waushara
Buffalo	Dane	Fond du Lac	Jackson	Langlade	Milwaukee	Pierce	Rusk	Vernon	Winnebago
Burnett	Dodge	Forest	Jefferson	Lincoln	Monroe	Polk	Saint Croix	Vilas	Wood
							Sauk	Walworth	ALL COUNTIES

Services Provided (Check all that apply): ☐ Installer ☐ Pumper ☐ Designer ☐ Inspector

☐ Regulator ☐ Educator ☐ Soil Scientist ☐ Soil Tester ☐ Excavator ☐ Manufacturer ☐ Supplier ☐ POWTS Evaluator

☐ POWTS Maintainer ☐ Plumber ☐ Surveyor ☐ Other: _____

Additional Member #1: (Please list any additional members on separate sheet with all contact information)

Name: _____ Email: _____ Membership Rate: \$ 115

Phone: _____ Fax: _____ Website: _____

Counties you work in: _____

Additional Member #2:

Name: _____ Email: _____ Membership Rate: \$ 115

Phone: _____ Fax: _____ Website: _____

Counties you work in: _____

Additional Member #3:

Name: _____ Email: _____ Membership Rate: \$ 115

Phone: _____ Fax: _____ Website: _____

Counties you work in: _____

Total Due: First WOWRA Membership \$ _____ + \$ _____ (_____ Additional WOWRA Memberships @ \$115 each) =

☐ Check enclosed (Payable to WOWRA)

TOTAL Amount: \$ _____





Please mail to: WOWRA | PO Box 833 | Germantown, WI 53022

Business Promotion Program



Business Promotion Offer Your *Best Value* for 2020

WOWRA is pleased to offer a simple way to cover all of your promotional activities for 2020. Select the package that works for you! Some including a membership (\$230 value), a Joint Conference exhibitor booth (\$500 value), tabletop displays at our seminars (4+ at \$200 each); advertising in the monthly newsletter to the industry (\$1,200, \$700, \$500, \$300 value, depending on size of ad), ad/link from website (\$300 value), and published press releases (\$50 each).

	Platinum Promotional Package <ul style="list-style-type: none">• 2020 Membership• Joint Conference Exhibit Booth• Tabletop at WOWRA Seminars• Full-page ad (8½ x 11) in monthly WOWRA News• Up to 4 press releases in WOWRA News• Link on the WOWRA Website to your website	\$2,500
	Gold Promotional Package <ul style="list-style-type: none">• 2020 Membership• Half-page ad (8½ x 5½) in WOWRA News• Tabletop at WOWRA Seminars• Up to 2 press releases in WOWRA News• Link on the WOWRA website to your website	\$1,500
	Silver Promotional Package <ul style="list-style-type: none">• 2020 Membership• Quarter-page ad (4¼ x 4½) in WOWRA News• 1 press releases in WOWRA News• Link on the WOWRA website to your website	\$900
	Bronze Promotional Package <ul style="list-style-type: none">• Eighth-page page ad (2½ x 3½) in WOWRA News	\$400

This is a great opportunity to promote your business to your target audience! There's simply no better value for those interested in reaching the POWTS industry.

BONUS: You'll receive the appreciation of the industry! We appreciate the value you bring through information about products and services that can save time and money. We also appreciate your support for and commitment to WOWRA and the work we do to protect and advance the industry – something that benefits all of us!

Questions? Contact us at 888-782-6815 or info@wowra.com.

[Click Here to Sign Up](#)

Quality is a standard, not an extra.



Wieser Concrete provides superior septic/holding tank wastewater solutions with innovative, cost-effective, and high-quality precast products our customers can count on.

UNIFORM QUALITY — Precast tanks from Wieser are manufactured in a controlled environment ensuring consistent quality and structure.

STRENGTH — Wieser tanks are structurally engineered and utilize post-tensioning to ensure strength and durability.

PROVEN PERFORMANCE AND DESIGN — Wieser Concrete has been manufacturing precast concrete tanks since 1965. Wieser tanks are designed with strength and durability in mind and continue to be the choice of contractors who demand outstanding performance and consistent design for their projects. Wieser tanks are vacuum-tested, watertight structures that guarantee maximum service and longevity.

RAPID INSTALLATION TIME — Unlike poured-in-place, Wieser precast tanks do not have to wait to cure on the job site. Wieser structures can be set when needed and construction can continue without delay.



WIESER CONCRETE

Contact us:
(715) 647-2311
wieserconcrete.com

2021 Joint Winter Conference

It's not too early to mark these dates for our Joint Winter Conference for 2021:

Thursday, January 14 – Friday, January 15

**Chula Vista Resort
Wisconsin Dells, WI**



We'll have keynote speakers, breakout session, an exhibit hall, and networking events, all planned with YOU in mind. Come for one day or come for both. Extend your stay on Friday and enjoy some time with your family too! Chula Vista offers great value, a huge waterpark, one of the best steakhouses in America, and more. Hold the dates and look for more information mid-year....

Do you have a topic or speaker that you'd like to hear at the Conference?

Are you interested in exhibiting, sponsoring, or presenting?

Give us a call at (888) 782-6815!

Protection that matters



Count on EMC® and Nolan Insurance Agency, LLC, to protect the Wisconsin liquid waste industry with the right coverages. We offer:

- **Tailored coverage options** to fit your industry's unique needs
- **Local, responsive service**
- **Specialized expertise** in underwriting, claims and loss control
- **Valuable services**, including online training, at no additional cost
- **Competitive premiums** and workers' compensation dividend programs

Contact Nolan Insurance to learn more.



800-266-6526
www.nolanins.com

EMC Milwaukee Branch
16455 W. Bluemound Road
Brookfield, WI 53005
855-495-1800
www.emcins.com

©Copyright Employers Mutual Casualty Company 2019. All rights reserved.



WOWRA Board of Directors (2020/2021)

President

Mark Wieser
Wieser Concrete Products, Inc.
Phone: (608) 742-4464
markw@wieserconcrete.com

Vice President

Todd Stair
Herr Construction
Phone: (262) 968-2550
todd@herrcorp.com

Secretary/Treasurer

Brendon Reichard
JR's Excavating
Phone: (262) 339-9040
info@jrs-inspections.com

Directors At Large

Shea Geffert
Blakeslee R.S. & S.T., Inc.
Phone: (608) 963-5895
shea@rucls.net

Damon Huibregtse
Dirkse & Huibregtse LLC
Phone: (920) 980-3606
Dhinc88@gmail.com

Ben Kinas
Kinas Excavating
Phone: (920) 294-3879
kinasexcavating@gmail.com

Kevin Stange
Sheboygan County
Phone: (414) 550-0928
1kevinstange@gmail.com

Executive Director

Jeffrey J Beiriger
PO Box 833
Germantown, WI 53022
Phone: (888) 782-6815 x1
info@wowra.com

Government Relations

George Klaetsch
10 E. Doty St., Suite 523
Madison, WI 53703
Phone: (608) 283-2587
gklaetsch@kpasllc.com

Mission Statement:

To advance the education of and to protect and promote the profession of onsite wastewater technology in Wisconsin on behalf of our membership.